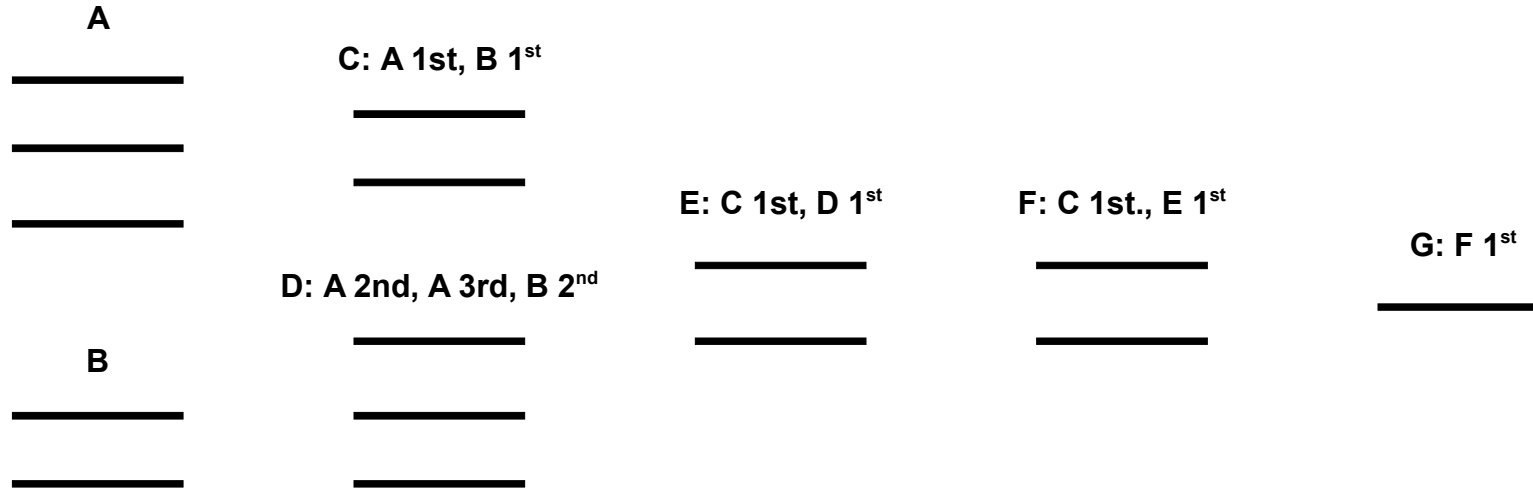


Race of Champions



Notes:

Heat A: All 5 Grade Champions draw from tokens 1, 2, 3, X, X. Digits determine Lane , X's go to Heat B.

Heat B: Two racers with X's in Heat A draw draw from tokens 1, 2, 3 and race in drawn lane.

Heats C – F: Lane occupancy is determined by draw from tokens 1, 2, 3.

Heat E: This heat matches a racer with no losses against a racer with 1 loss.

If the heat results in a racer with 2 losses, the Championship is decided.

Heat F: This heat is needed only if the winner from the D heat wins the E heat, resulting in two racers with one loss each.